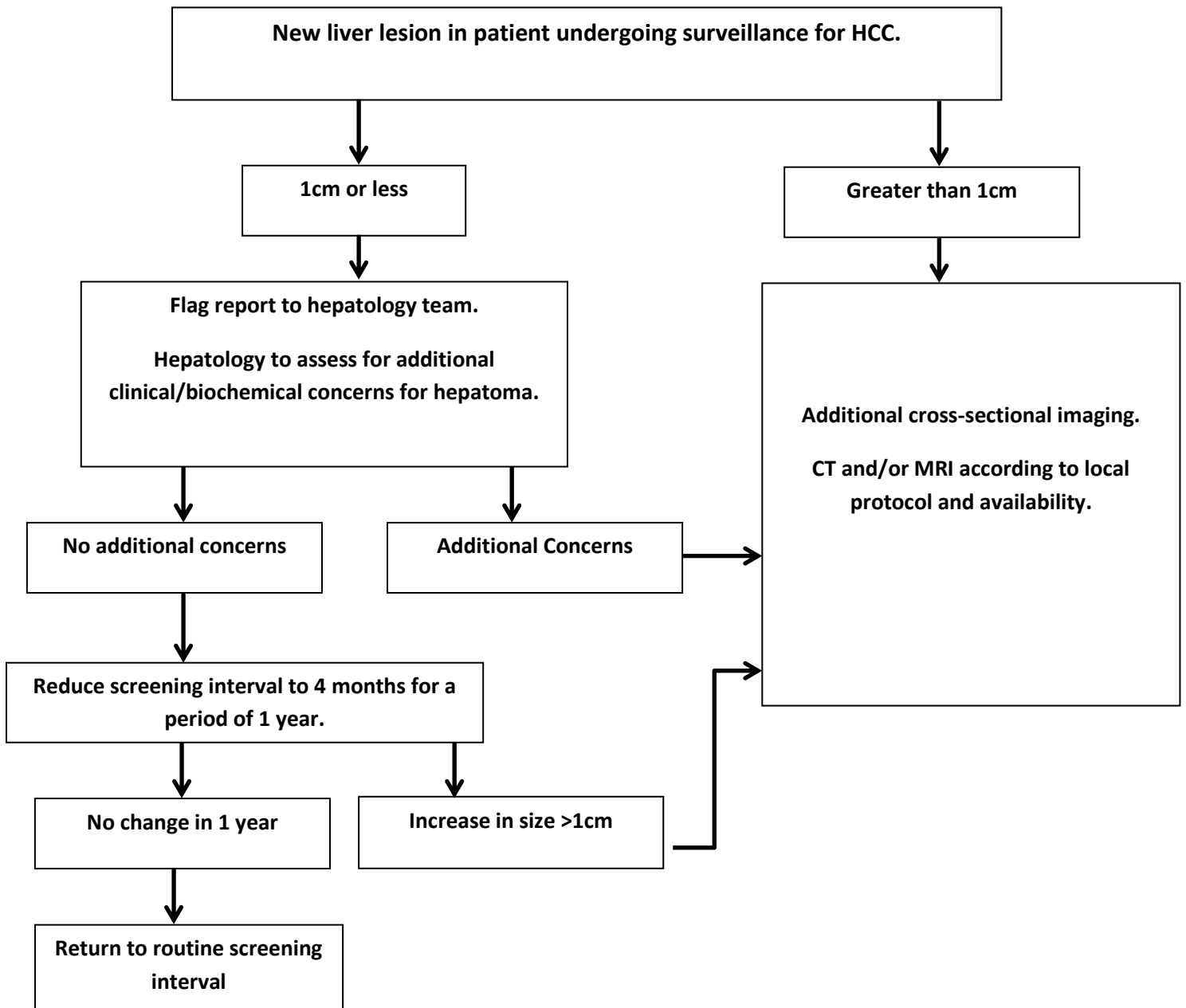


Ultrasound management of liver nodules found during ultrasound surveillance for chronic liver disease.

- Ultrasound is commonly used in surveillance for hepatocellular carcinoma (HCC) in patients with chronic liver disease.
- With increasing ultrasound equipment quality and ultrasound expertise, small (<1cm) solitary nodules are being more frequently detected. Definitive characterisation of these lesions is difficult with any imaging modality.
- This algorithm aims to standardise ultrasound management where a liver lesion has been discovered during routine surveillance of patients with chronic liver disease.



References

Bruix J, Sherman M. Management of hepatocellular carcinoma: An update. *Hepatology (Baltimore, Md)*. 2011;53(3):1020-1022. doi:10.1002/hep.24199.

EASL. EASL–EORTC Clinical Practice Guidelines: Management of hepatocellular carcinoma. *Journal of Hepatology*. 2012;56:908-943

Agreed by the Diagnostic Regional Ultrasound Group

Review date : October 2022