

Simple Rules FEATURES of a benign mass (B-features)

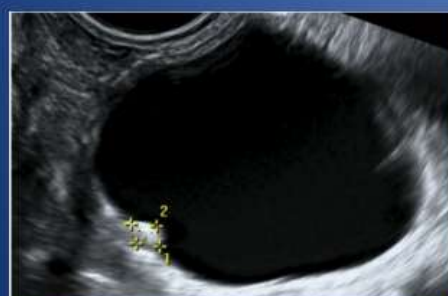


B1: Unilocular cyst

A mass is classified as benign if at least one B-feature is present and no M-features are present



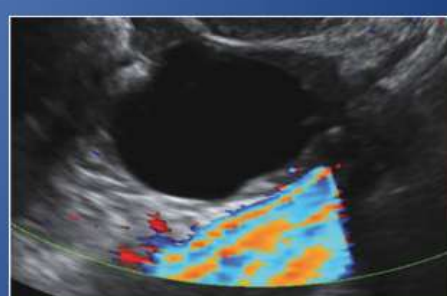
B4: Smooth multilocular tumor, with largest diameter < 100 mm



B2: Presence of solid components, with largest diameter < 7 mm



B3: Presence of acoustic shadows



B5: No blood flow (color score 1)

Simple Rules FEATURES of a malignant mass (M-



M1: Irregular solid tumor

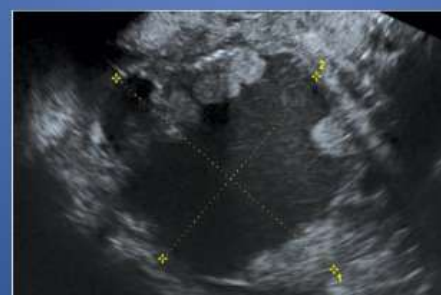
A mass is classified as malignant if at least one M-feature is present and no B-features are present



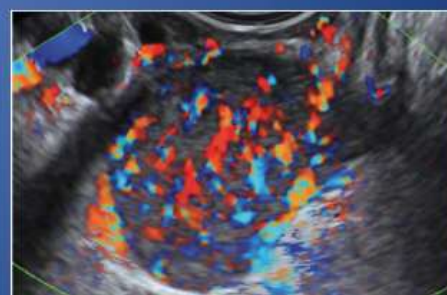
M4: Irregular multilocular solid tumor with largest diameter ≥ 100 mm



M2: Presence of ascites



M3: At least four papillary structures



M5: Very strong blood flow